

P.O.Number :
Please Keep This Number For
Future Reference
THIS FORMS PARTS OF
YOUR GUARANTEE!!

bensons
for beds



Minimum two
person assembly



Approximate
Assembly Time

Product Details

STK799001 Slate Grey
DSP799001 Slate Grey

GIOVANNA 3 SEATER CORNER SOFABED WITH STORAGE

Assembly Instructions

Please keep these instructions for future reference.



Regrettably self-assembly items cannot be returned once assembly is part or fully completed unless the items are found to be faulty. Should you need to return the un assembled product, please repack in its original packaging.

Important Information

- We suggest you spend a short time reading through this leaflet and then follow the simple step-by-step instructions.
- Carefully check that you have all the parts before beginning assembly.
- Keep fittings out of children's reach and keep children well away from construction area.
- We suggest you retain these instructions for future reference.

Product Information

- 3 Seater sofa bed
- Upholstered sofa bed using velvet Fabric. Conforms to BS EN 12520 & BS EN 1725 & BS EN 13759 & BS EN 5852.
- Cover fabric conforms to relevant performance and restricted substance standards.

Care Instructions

- Avoid exposing the furniture to excessive heat or direct sunlight as this can cause cracking or deterioration of the color.
- Periodically check & re-tighten any fastener.
- Periodically dust lightly with a clean soft cloth.
- Do not use silicone based furniture polish.
- Any spills should be removed immediately with a soft damp cloth.
- TAKE CARE WHEN MOVING THE FURNITURE AND NEVER DRAG THE PIECES ACROSS THE FLOOR, AS THIS WILL CAUSE DAMAGE TO THE JOINTS.

Important

- Various components and fixings needed to complete the assembly are packed inside a zipped cover on the underside of the main body.

Tips before you start!

1. Please check that all parts are present before you start the assembly of your furniture.
NOTE - All components and fixings are packed inside the main body.
2. For ease and speed of assembly, we recommend that before you commence each step of the assembly, that you identify all the parts required for that step.
3. For larger items, please ensure that you have sufficient space and people (as indicated on page 1) to assemble your product safely. (Minimum Two Persons)
4. We recommend where possible, all items are assembled near to the area where they will be placed in use, to avoid moving the product unnecessarily once assembled.
5. Please ensure that your product is placed on a level floor area. (Avoid setting up and installing your product on uneven floor surface.
6. For the protection of your furniture, we recommend that the product is placed on a protected surface during assembly to prevent any damage.
7. During assembly please take care not to over-tighten any fittings, as this may damage the product.

Care and Maintenance of your Furniture

- Please periodically check all fittings and re-tighten as necessary.
- To clean your item, please use a soft damp cloth and wipe clean.
- Please do not jump on your furniture.
- Never allow any kind of liquid to remain on your furniture. This can cause finishes to de-laminate or Discolour. Take care when spraying Perfume and deodorants etc as the vapour can settle on the fabric surface and cause damage.
- It is important to Never Drag your bed as this can cause damage to the joints and the fixings. This may invalidate your guarantee.
- The product should always be lifted into position or if moved for cleaning.



GIOVANNA 3 SEATER CORNER SOFABED WITH STORAGE

Components

(A) Sofa Return
(1670x670x690mm) x 1



Note: Components packed inside (Ref (C)+ Hardware) See Step 1

(B) Main Seat
(1340x880x690mm) x 1



(C) Arm
(730x580x120mm) x 2



Note: Packed inside sofa return storage area (Ref (B)) See Step 1

(D) Leg
(55/35x80mm) x 8



Note: Packed inside sofa return storage area (Ref (B)) See Step 1

Hardware List

(E) M8x80 Threaded rod x 8



(F) M8x85mm Bolt x 4



(G) 16mm Flat washer x 16



(H) Nut x 12



(I) 16x27mm x 12



(J) 5mm Allen key x 1



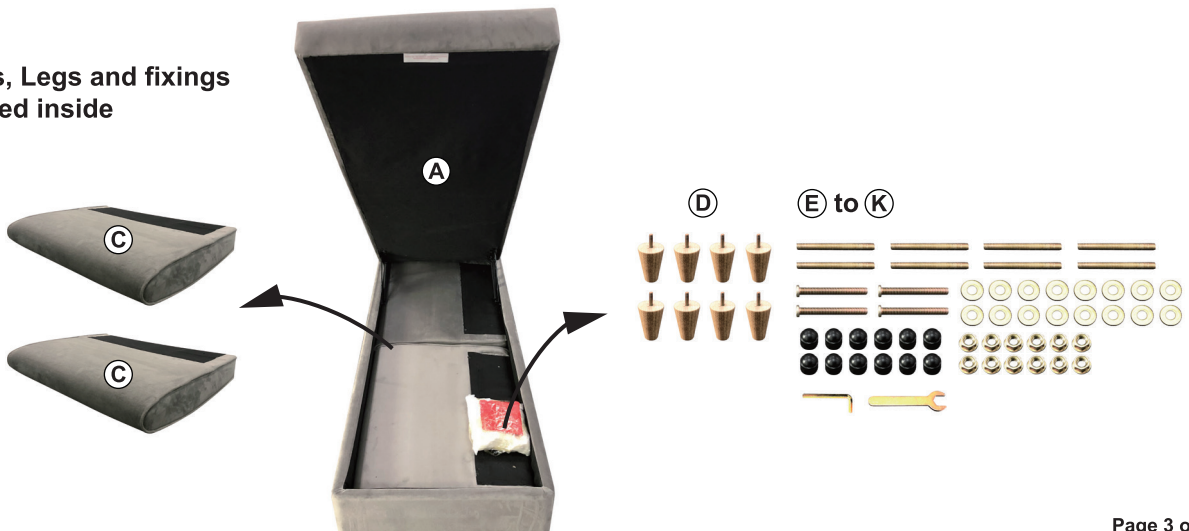
(K) Spanner x 1



Note: All hardware is packed inside the storage area of the sofa return (Ref (B)) See Step 1

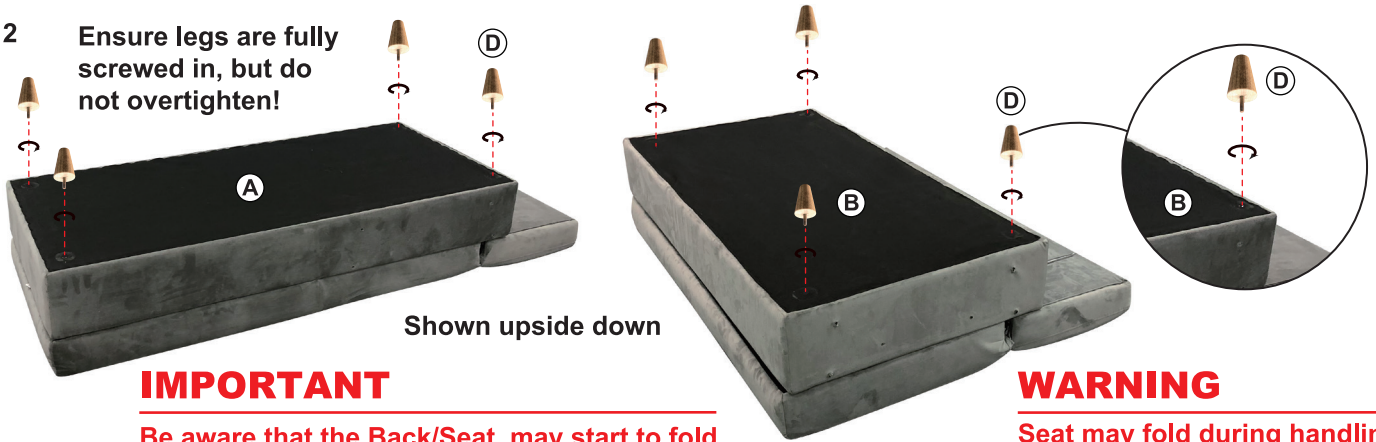
Step 1

Arms, Legs and fixings packed inside



GIOVANNA 3 SEATER CORNER SOFABED WITH STORAGE

Step 2 Ensure legs are fully screwed in, but do not overtighten!



Shown upside down

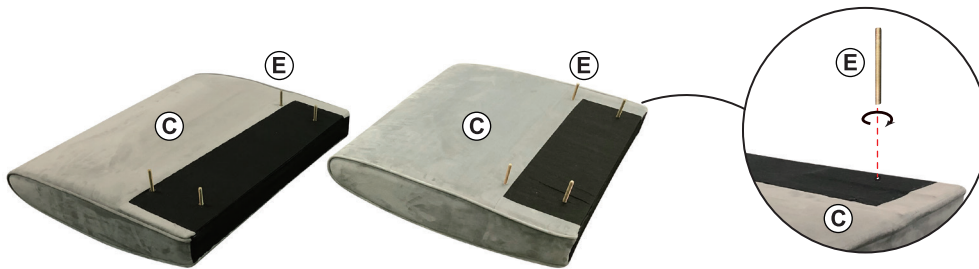
IMPORTANT

Be aware that the Back/Seat may start to fold during turning over. Proceed with caution and keep hands clear of the folding area.

WARNING

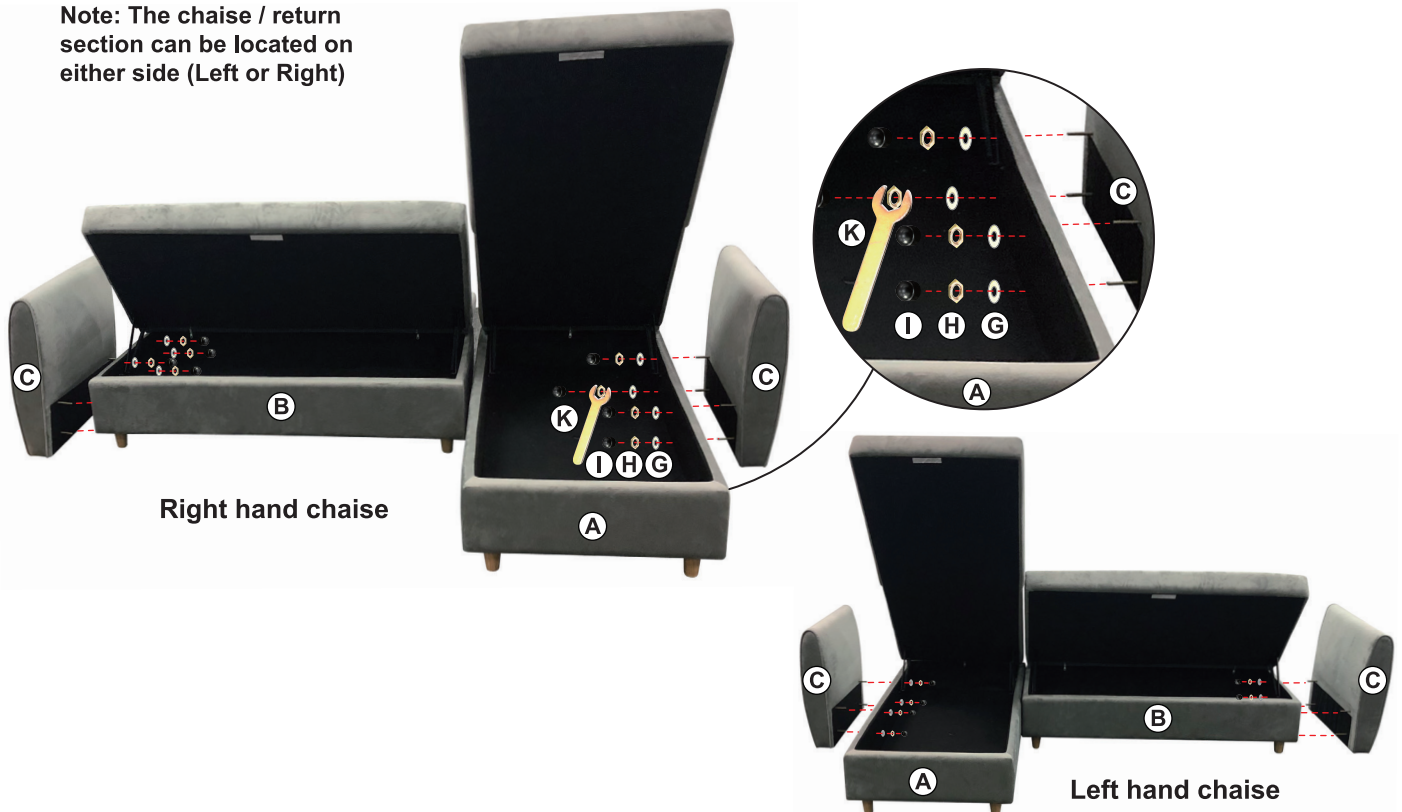
Seat may fold during handling. Keep hands away from folding / moving areas!

Step 3



Step 4 Assemble arms (C)
Both seat sections must be fully raised.

Note: The chaise / return section can be located on either side (Left or Right)



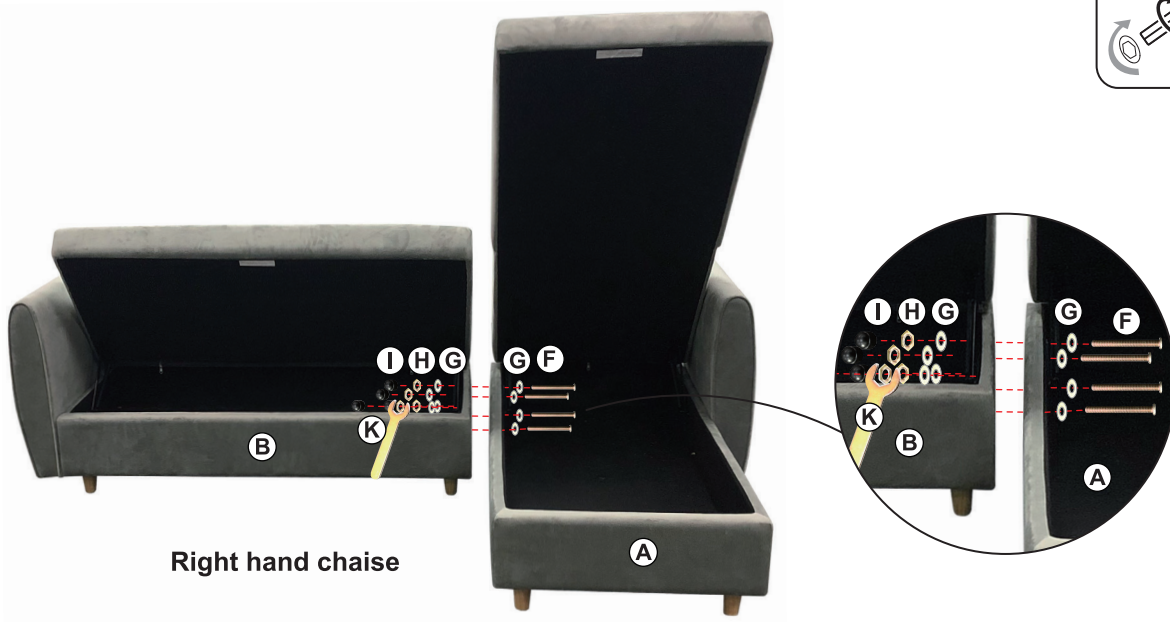
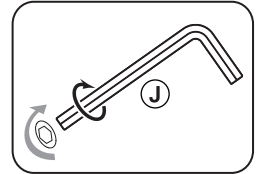
Right hand chaise

Left hand chaise

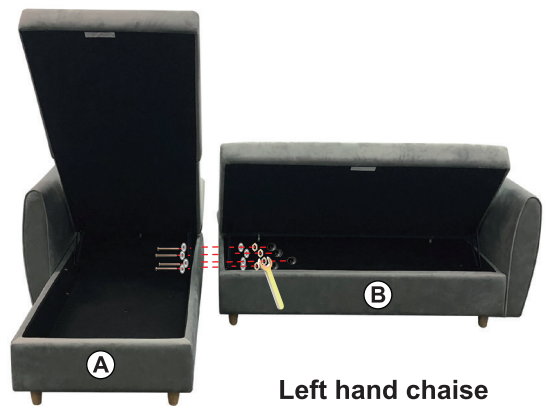
GIOVANNA 3 SEATER CORNER SOFABED WITH STORAGE

Step 6

Assemble the sofa and chaise sections together.
Both seat sections must be fully raised.



Right hand chaise



Left hand chaise

WARNING

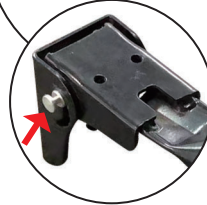
Seat may fold during handling.
Keep hands away from
folding / moving areas!

IMPORTANT

Be aware that the Back/Seat may start to fold
during turning over. Proceed with caution
and keep hands clear of the folding area.

GIOVANNA 3 SEATER CORNER SOFABED WITH STORAGE

Step 6



Press the spring loaded buttons at the top of each leg to open out the support legs until they click into position.

Never use the Sofa as a bed without first opening the extending support legs.



Step 7



IMPORTANT

The support legs must be in position whenever the futon is in the sleeping position.



a: Fold back rest fully forward.
b: Return back rest to flat position.